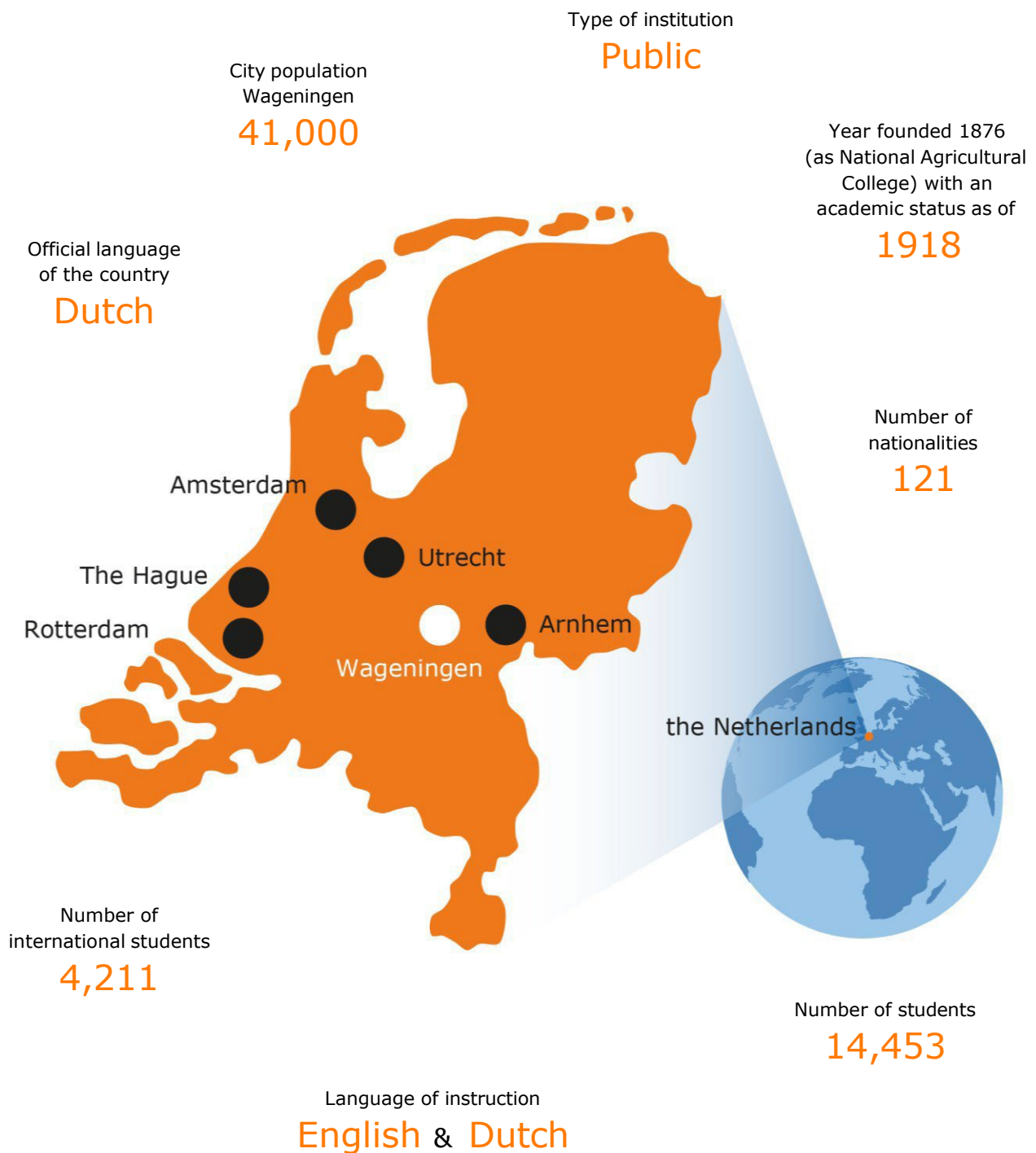


# Student Exchange

## Wageningen University & Research



---

## Academic calendar and dates

The academic year is divided in six periods. The Autumn term (which starts in September) consists of period 1 to 3 and the Spring term (which starts in February) consists of period 4 to 6.

### Calendar academic year 2024-2025<sup>1</sup>

	Period
Summer Orientation week (Annual Introduction Days) <sup>2</sup>	16/08/2024 – 21/08/2024
Study Period 1	02/09/2024 – 25/10/2024
Study Period 2	28/10/2024 – 20/12/2024
Christmas Holidays	23/12/2024 – 05/01/2025
Study Period 3	06/01/2025 – 31/01/2025
Resit exams p1+2	03/02/2025 – 07/02/2025
Winter Orientation week (Annual Introduction Days) <sup>2</sup>	03/02/2025 – 07/02/2025
Study Period 4	10/02/2025 – 08/03/2025
Study Period 5	10/03/2025 – 02/05/2025
Resit exams p2+3+4	05/05/2025 – 09/05/2025
Study Period 6	12/05/2025 – 04/07/2025
Resit exams p5+6	07/07/2025 – 18/07/2025
Summer Holidays	21/07/2025 – 29/08/2025

<sup>1</sup> Schedule is subject to changes, please consult this website for up to date information: [Academic Year](#)

<sup>2</sup> Orientation week (Annual Introduction Days): see [www.aidwageningen.nl/en](http://www.aidwageningen.nl/en)



---

## Academic

### Academic Field

Faculty of Life Sciences

### Course descriptions

Study Handbook: [www.wur.eu/studyhandbook](http://www.wur.eu/studyhandbook)

### ECTS

General course: 6 ECTS

Full year load: 60 ECTS

### Classes conducted in English

Most 2<sup>nd</sup> and 3<sup>rd</sup> year BSc classes are in English.

All MSc classes are in English (B2 level required).

### Minors

Wageningen University & Research has 40 minors in English.

Check them here: [www.wur.eu/listofminors](http://www.wur.eu/listofminors)

## Eligibility for exchange

### Inter-institutional agreement

There should be an inter-institutional agreement for Student Mobility for Study (SMS) between the home university and Wageningen University & Research.

### Registration

Exchange students should be registered as a regular student at one of the partner universities.

### General course requirements

Preferably you have completed 120 ECTS, which equals at least two years two years of study at the home university/academic background. Students must fulfil course requirements (assumed knowledge in course descriptions).

### English proficiency (minimum scores)

- Proof of English proficiency by your home university (minimum B2)
- TOEFL internet-based: 80
- IELTS : 6.0
- Cambridge Certificate of Advanced English: C
- Cambridge First Certificate: B
- Cambridge Certificate of Proficiency in English: C
- German Abitur: 06
- Belgian ADO or TSO: 60
- International Baccalauréat: 3

## Application procedure

Detailed information about the exchange application procedure at Wageningen University & Research (WUR), deadlines and how to select courses can be found on our exchange website: [www.wur.eu/incoming](http://www.wur.eu/incoming)

Students have to be nominated for exchange by the coordinator from their home university. The nominations should be sent to: [application.studentexchange@wur.nl](mailto:application.studentexchange@wur.nl)

Deadlines	1 <sup>st</sup> Semester (start in September)		2 <sup>nd</sup> Semester (start in January or later)	
	NON-EU students	EU students	NON-EU students	EU students
<b>Nomination</b>	April 1 <sup>st</sup>	April 15 <sup>th</sup>	September 15 <sup>th</sup>	October 1 <sup>st</sup>
<b>Application</b>	April 15 <sup>th</sup>	May 1 <sup>st</sup>	October 1 <sup>st</sup>	October 15 <sup>th</sup>

---

## Estimated monthly expenses

Rent of student accommodation



€ 350 - € 550

Health insurance and legal liability insurance



€ 75

Groceries



€ 400

Books and study materials



€ 200 per year

Total

About € 1225 per month

## Housing

Because there is a high demand for student housing in Wageningen, it can be challenging to find a place to stay. As there is a shortage of housing, the number of rooms allocated to exchange students is very limited. In most cases housing is guaranteed for non-EU students because of immigration rules. Unfortunately we cannot offer EU students a student room. We would recommend to register for a room via **www.room.nl**. For more information, check the website of **Idealis**.

## Immigration information

For some incoming students, Wageningen University & Research needs to apply for a entry visa (MVV) and/or residence permit (VVR) after admittance; students should not start procedures themselves. The Student Immigration Office of Wageningen University will send the application for entry visa and/or residence permit to the immigration authorities (IND). The dues for this procedure are € 228,- (2024). In the table below you can check which permit(s) are needed.

Country of origin	MVV entry visa needed?	Residence permit needed?	Working permit needed?
EU/EFTA countries	NO	NO	NO
Australia, Canada, Japan, Monaco, New-Zealand, South Korea, UK, USA, Vatican City	NO	YES	YES
All other countries	YES	YES	YES

## Social life

Annual Introduction Days



[www.aidwageningen.nl/en](http://www.aidwageningen.nl/en)

Erasmus Student Network



[www.esn-wageningen.nl](http://www.esn-wageningen.nl)

Student Associations and Sports

[www.wur.eu/associations](http://www.wur.eu/associations)



Sport Center de Bongerd



---

**General contact information**

**Wageningen University & Research**

Erasmus code

NL WAGENIN01

Website

[www.wur.nl/exchange](http://www.wur.nl/exchange)

Social media



[www.facebook.com/studyabroadwur](https://www.facebook.com/studyabroadwur)



[www.instagram.com/studyabroadwur](https://www.instagram.com/studyabroadwur)

